

Manual

Compact Polisher

0.4 A

Motor

150 mm

6"

Diameter



Applies for:

Code

Model

102633

PULA-6AM

PULA-6AM

⚠ CAUTION



Read this manual thoroughly
before using the tool.



Technical data.....	3
Power requirements.....	3
 General power tool safety warnings.....	4
 Safety warnings for car polishers.....	5
Parts.....	6
Mounting.....	6
Preparation.....	6
Start up.....	7
Maintenance.....	8
Troubleshooting.....	8
Authorized service centers.....	9
Warranty policy.....	10

CAUTION

To gain the best performance of the tool, prolong the duty life, make the Warranty valid if necessary, and to avoid hazards of fatal injuries please read and understand this Manual before using the tool.

Keep this manual for future references.

The illustrations in this manual are for reference only. They might be different from the real tool.

Use and care recommendations



RESPECT THE WORK CYCLES. 30 minutes of work per 15 minutes of rest
Maximum 3 hours daily.



Avoid using the cord to move, lift, or disconnect the tool.



ALWAYS turn the polisher ON and OFF while it's in contact with the work surface.



Avoid pressing down on the surface with the polisher. Let the movement of the bonnet do the work instead.



Perform regular **MAINTENANCE** on your machine. (page 8)

PULA-6AM

Code	102633		
Description	Compact polisher		
Discos	6"		
Voltage	127 V~		
Frequency	60 Hz		
Current	0.4 A		
Power	45 W		
Speed	3 500 RPM		
Work cycle	30 minutes work per 15 minutes rest. Maximum 3 hours per day		
Conductors	18 AWG x 2 C with insulation temperature of 221 °F		
Insulation	Class II	IP Grade	20

The power cable has cable clamps type: Y
The construction class of the tool is: Reinforced Insulation.

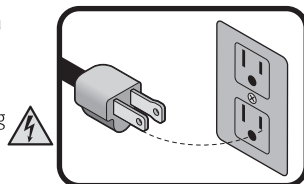
⚠ WARNING Avoid the risk of electric shock or severe injury. When the power cable gets damaged it should only be replaced by the manufacturer or at a TRUPER Authorized Service Center. The build quality of the electric insulation is altered if spills or liquid gets into the tool while in use. Do not expose to rain, liquids and/or dampness.

⚠ WARNING Before gaining access to the terminals all power sources should be disconnected.



Power requirements

⚠ WARNING Tools with double insulation and reinforced insulation are built with a polarized plug (one prong is wider than the other). This plug fits in any polarized outlet and can only be connected one way. If the plug does not fit completely into the outlet, reverse the plug. If it is not fitting, call a qualified electrician or install a polarized outlet. Do not alter the plug in any way. Double insulation eliminates the need of a three-prong grounded power plug or a grounded electric system.



⚠ WARNING When using an extension cable, make it has sufficient gauge to carry the current your tool will draw. A lower gauge cable will cause voltage drop in the line, resulting in power loss and the motor will overheat. The following table shows the right size to use depending on cable's length and the ampere capability shown in the tool's nameplate. When in doubt use the next higher gauge.

Ampere Capacity	Number of Conductors	Extension Gauge	
		From 6 ft to 49 ft	Higher than 49 ft
From 0 A and up to 10 A	3 (one grounded)	18 AWG	16 AWG
From 10 A and up to 13 A		16 AWG	14 AWG
From 13 A and up to 15 A		14 AWG	12 AWG
From 15 A and up to 20 A		8 AWG	6 AWG

* It is safe to use only if the extensions have a built-in artifact for over current protection.

AWG = American Wire Gauge. Reference: NMX-I-195-ANCE

⚠ WARNING When using power tools outdoors use VOLTECK. grounded extension cable labeled "Outdoors Use". These extension cables are specially manufactured for outdoors use and reduce the risk of electric shock.





General power tool safety warnings



⚠ WARNING! Read carefully all safety warnings and instructions listed below. Failure to comply with any of these warnings may result in electric shock, fire and / or severe damage. **Save all warnings and instructions for future references.**

Work area

Keep your work area clean, and well lit.

Cluttered and dark areas may cause accidents.



Never use the tool in explosive atmospheres, such as in the presence of flammable liquids, gases or dust.

Sparks generated by power tools may ignite the flammable material.



Keep children and bystanders at a safe distance while operating the tool.

Distractions may cause losing control.



Electrical Safety

The tool plug must match the power outlet. Never modify the plug in any way. Do not use any adapter plugs with grounded power tools.

Modified plugs and different power outlets increase the risk of electric shock.



Avoid body contact with grounded surfaces, such as pipes, radiators, electric ranges and refrigerators.

The risk of electric shock increases if your body is grounded.

Do not expose the tool to rain or wet conditions.

Water entering into the tool increases the risk of electric shock.

Do not force the cord. Never use the cord to carry, lift or unplug the tool. Keep the cord away from heat, oil, sharp edges or moving parts.

Damaged or entangled cords increase the risk of electric shock.

When operating a tool outdoors, use an extension cord suitable for outdoor use.

Using an adequate outdoor extension cord reduces the risk of electric shock.

If operating the tool in a damp location cannot be avoided, use a ground fault circuit interrupter (GFCI) protected supply.

Using a GFCI reduces the risk of electric shock.

Personal safety

Stay alert, watch what you are doing and use common sense when operating a tool. Do not use a power tool while you are tired or under the influence of drugs, alcohol or medication.

A moment of distraction while operating the tool may result in personal injury.

Use personal protective equipment. Always wear eye protection.

Protective equipment such as safety glasses, anti-dust mask, non-skid shoes, hard hats and hearing protection used in the right conditions significantly reduce personal injury.



Prevent unintentional starting up. Ensure the switch is in the "OFF" position before connecting into the power source and / or battery as well as when carrying the tool.

Transporting power tools with the finger on the switch or connecting power tools with the switch in the "ON" position may cause accidents.

Remove any wrench or vice before turning the power tool on.

Wrenches or vices left attached to rotating parts of the tool may result in personal injury.

Do not overreach. Keep proper footing and balance at all times.

This enables a better control on the tool during unexpected situations.

Dress properly. Do not wear loose clothing or jewelry. Keep hair, clothes and gloves away from the moving parts.

Loose clothes, jewelry or long hair may get caught in moving parts.



If you have dust extraction and recollection devices connected onto the tool, inspect their connections and use them correctly.

Using these devices reduce dust-related risks.

Power Tools Use and Care

Do not force the tool. Use the adequate tool for your application.

The correct tool delivers a better and safer job at the rate for which it was designed.



Do not use the tool if the switch is not working properly.

Any power tool that cannot be turned ON or OFF is dangerous and should be repaired before operating.

Disconnect the tool from the power source and / or battery before making any adjustments, changing accessories or storing.

These measures reduce the risk of accidentally starting the tool.

Store tools out of the reach of children. Do not allow persons that are not familiar with the tool or its instructions to operate the tool.

Power tools are dangerous in the hands of untrained users.



Service the tool. Check the mobile parts are not misaligned or stuck. There should not be broken parts or other conditions that may affect its operation. Repair any damage before using the tool.

Most accidents are caused due to poor maintenance to the tools.

Keep the cutting accessories sharp and clean.

Cutting accessories in good working conditions are less likely to bind and are easier to control.



Use the tool, components and accessories in accordance with these instructions and the projected way to use it for the type of tool when in adequate working conditions.

Using the tool for applications different from those it was designed for, could result in a hazardous situation.

Service

Repair the tool in a TRUPER Authorized Service Center using only identical spare parts.

This will ensure that the safety of the power tool is maintained.

Safety warnings for the use of car polishers

TRUPER PRO

This power tool is intended to function as a polisher. Read all safety warnings, instructions, illustrations and specifications provided with this power tool.

Failure to follow the instructions outlined below may result in electric shock, fire and/or serious injury.

- It is not recommended that operations such as grinding, sanding, planing or cutting be performed with this power tool.
- Operations for which this power tool was not designed may result in an accident and cause personal injury.
- Do not use accessories that are not specifically designed and recommended by the power tool manufacturer.
- The fact that the accessory may be installed on the power tool does not ensure safe operation.
- The rated speed of the accessory must be at least equal to the maximum speed marked on the power tool.
- Accessories running faster than their rated speed may break and become detached.
- The outside diameter and thickness of the accessories must be within the rated capacity of the power tool.
- Incorrectly sized accessories cannot be properly guarded or controlled.
- Accessories that do not match the installation devices of the power tool will cause unbalance, excessive vibration and may cause loss of control.
- Do not use a damaged accessory. Before each use, inspect the accessories, for example:

Check polishing bonnet and base for cracks.

Check the backs for cracks, tears or excessive wear.

- If the power tool or an accessory is dropped, inspect for damage or install an undamaged accessory. After inspecting and installing an accessory, stand clear and keep bystanders away from the plane of the rotating accessory, run the power tool at full speed with no load for one minute.
- Damaged accessories will generally break during this time period.
- Use personal protective equipment. Depending on the application, use face shield, safety glasses. As appropriate, use a dust mask, hearing protectors, gloves and shop apron capable of stopping small abrasive fragments or pieces of workpieces.
- Keep people present at a safe distance from the work area. Anyone entering the work area should wear personal protective equipment.
- Place the power cord away from the rotating accessory.
- If control of the power tool is lost, the cord may be cut or entangled and the operator's arm or hand may be pulled into the rotating attachment.
- Never release the power tool until the accessory comes to a complete stop.
- The rotating accessory may catch on a surface and pull the power tool out of your control.
- Do not operate the power tool while carrying it at your side.
- Accidental contact with the rotating accessory can snag on clothing, pulling the accessory toward your body.
- Regularly clean the vents on the power tool.
- The motor fan directs dust into the housing and excessive accumulation of metal dust can cause an electrical hazard.
- Do not use the power tool near flammable materials.
- Sparks can ignite these materials.
- Do not use accessories that require liquid coolants.

- Kickback is a sudden reaction to binding or snagging of a rotating wheel, backing, brush or other accessory. Jamming or snagging causes rapid stalling of the rotating attachment which in turn causes the power tool to force itself in an uncontrolled manner in the opposite direction of the attachment's rotation at the point of work.
- Kickback can occur as a result of misuse of power tools and/or improper operating procedures or unsuitable conditions and can be avoided by taking the precautions outlined below:
- Maintain a firm grip on the power tool, keep your body and arm so that you can resist kickback (abrupt recoil) forces. Always use the auxiliary handle; if provided, for maximum control over kickback or motor torque reaction during start-up.
- The operator can control torque and kickback force, if proper precautions are taken.
- Never place your hand near the rotating attachment.
- Attachments can kick back on the hand.
- Do not place your body in the area where the power tool may move if kickback occurs.

This propels the power tool in the opposite direction of the blade movement at the point of snagging or binding.

- Take special care when working around corners, sharp edges, and other areas. Avoid bouncing and jamming of the accessory.

Specific safety instructions

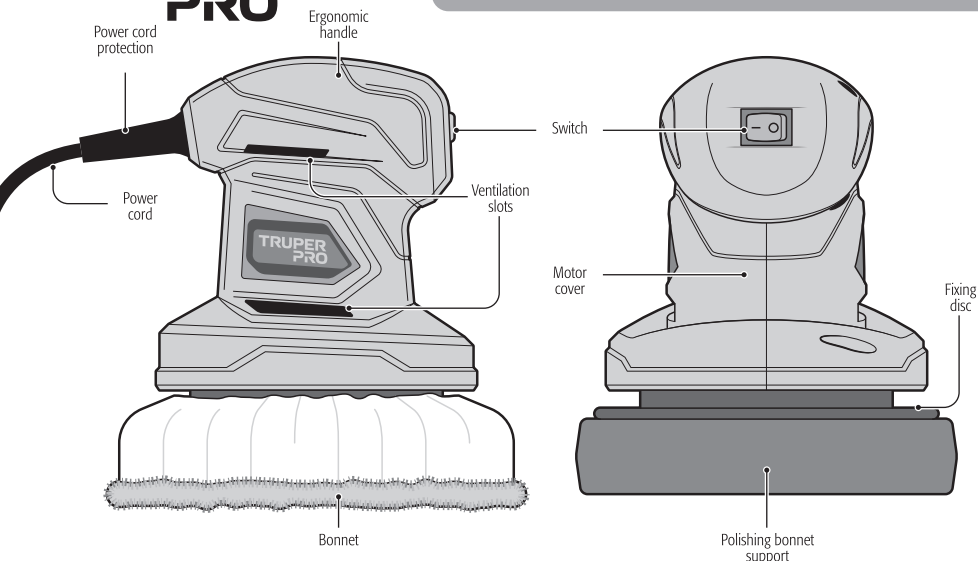
- Do not allow loose parts on the polishing bonnet, such as its fastening cords, to rotate freely. Guard or trim any loose attachment cords.
- Loose or spinning fastening cords can become entangled in fingers or snag on workpieces.
- Never keep your car running when using the polisher in an enclosed area.
- Test your polisher before starting work. In case the tool emits a strange sound or vibrates irregularly, turn it off. Disconnect the tool and take it to a TRUPER Authorized Service Center.
- When not in service, the tool should be turned off and unplugged.
- To avoid accidental starting, keep fingers away from the on/off switch when connecting the polisher to the electrical contact.
- To avoid electric shock, keep the tool dry and clean, free of any oil and grease residue.
- Always operate and stop the polisher while the buffing wheel is in contact with the surface to be polished. Failure to do so may result in the trowel slipping out of the holder.
- Do not force the tool. Hold it firmly without exerting downward pressure. Failure to do so will slow the movement of the machine, reduce the quality of the work and may cause severe damage to the tool.

Please note that the tool is not for industrial use, it is designed for home use.

- Do not use abrasive compounds.
- Take care of your tool. Your work will be easier if you keep your tool in good condition.
- Use personal protection equipment. Depending on the application, use a face shield, safety glasses. As appropriate, wear a dust mask, hearing protectors, gloves, and shop apron capable of stopping small abrasive fragments or pieces of workpieces.
- Eye protection must stop the debris that is generated by the various operations. Dust masks or respirators must filter out particulates that are produced by the operation. Prolonged exposure to high intensity noise can cause hearing loss.
- Keep bystanders at a safe distance from the work area.

Anyone entering the work area must wear personal protective equipment.

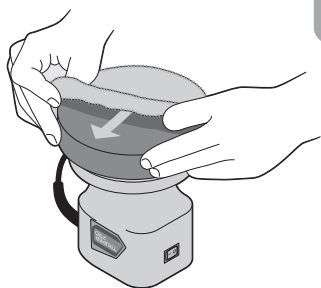
- Do not use accessories that require liquid coolants.
- The use of water or other liquid coolants may result in electric shock or electrocution.



Mounting

Placement of the polishing bonnet

- To place the polishing bonnet on the bonnet holder, place the polisher upwards.
- Stretch the elastic and wrap it around the polishing bonnet.
- Release the elastic so that the bonnet is secured in the polisher.
- To remove the bonnet, pull the elastic and remove the bonnet from the pad.



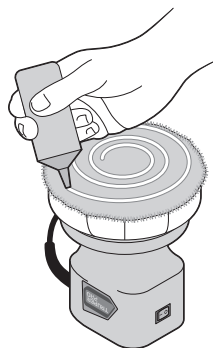
Preparation

Polish application

• Most polishes come in paste or liquid form. Before using any polish read all the instructions on the uses of the product and the correct way to use it.

• Application of liquid polish.

Apply a small circle of the liquid polish (about 1") in the center of the polishing bonnet followed by two more rings, each a little larger than the previous one. After the first application, the hood does not absorb as much liquid polish. Therefore, apply only two rings, using half the initial amount.

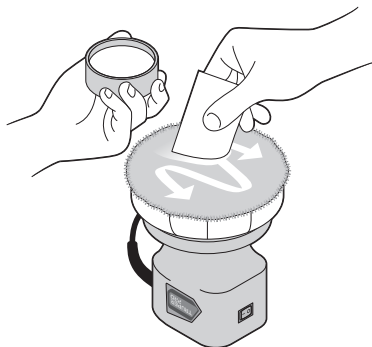


Polish application

• Application of paste polish

With a putty knife, or any flat blunt object, apply approximately one teaspoon of paste to the polishing bonnet. Spread the paste evenly over the entire surface of the bonnet.

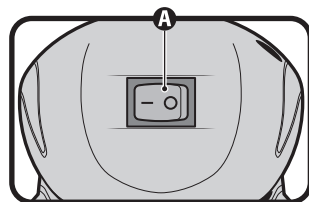
NOTE: Do not apply paste directly to the surface to be polished.



Start up

Turning ON / OFF

- To turn the tool on, press the switch **(A)** to the on position **(I)**.
- To turn the tool off, press the switch to the opposite side.

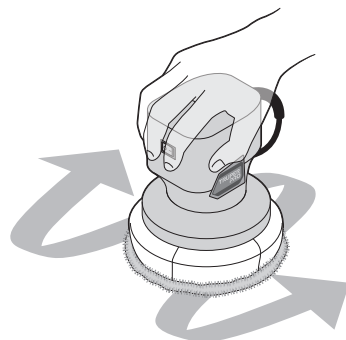


Applying polish to the surface

- Place the power cord over your shoulder so that it is out of the way while operating the polisher.
- Grasp the tool by the ergonomic handle.
- While holding the polisher firmly against the surface, turn the tool on.

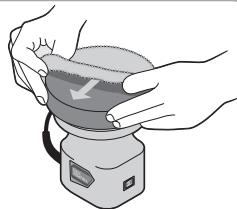
Note: always turn the polisher on and off while holding it against the work surface.

- Begin waxing large flat surfaces (follow a wide crisscross motion).
- Do not apply pressure to the surface with the polisher. Allow the motion of the bonnet to do the work.
- Once flat surfaces are covered, wax curved surfaces such as doors and side panels of cars (follow a circular motion), hold the polisher firmly, allow the cord to hang free.
- After applying polish to the entire surface, turn off the polisher. Wait until it stops rotating before lifting the polisher off the surface.
- Unplug the polisher.
- For hard-to-reach areas, such as the underside of bumpers or mirrors, apply polish by hand.



Polishing bonnet replacement

- Remove the applying bonnet by pulling the edges; replace it with the polishing bonnet in the same manner as the applying bonnet.
- Polish the surface in the same order in which you applied the polish, starting with the large flat surfaces and finishing with the hard-to-reach areas. Follow the same motion used to apply the polish, a wide crisscross sweeping motion on the large flat areas, and small circular motions on the other areas. Don't forget to let the tool do the work.



Maintenance

Cleaning and care

- Always keep the vents clean and free of obstructions to ensure proper cooling of the motor.
- Although the polishing bonnets can be machine washed with cold water, a little detergent for a few minutes and tumble dried on medium heat, hand washing and drying is recommended for longer bonnet life.
- To prolong the life and shape of the bonnet holder, store the polisher with the holder facing up.
- Remove the bonnet from the holder when the polisher is not in use.
- Use only soap and a dry sponge to clean the polisher. If necessary clean the housing with a damp cloth. Do not use solvents and do not immerse any part of the tool in any liquid.

Storage

- Store the tool neatly in a dry place and protected from dust and water.
- For best results, it is recommended to use 6" (150 mm) diameter tassel and TRUPER accessories such as BOR1-PULA & BOR2-PULA.

Bonnet holder replacement

Replacement of the bonnet bracket must be performed by a TRUPER Authorized Service Center.

Service

Use only spare parts and accessories recommended by the manufacturer. In the event the tool is not working, repairs should be performed in a TRUPER Authorized Service Center.

Carbon brush replacement

- Carbon brushes should be periodically checked and when worn, replaced always in a TRUPER Authorized Service Center.
- After replacing the carbon brushes request to inspect if the new carbon brushes can move freely in the carbon housing. Also request to run the tool 5 minutes to make even the contact with the carbon brushes and the commutator.
- Use only original TRUPER spare carbons specifically designed with the hardness and resistance adequate for each type of motor. Carbons that are out of specification could damage the motor.
- Both carbons should be changed simultaneous.

Troubleshooting

Problem

Possible cause

Solution

Wax is not evenly distributed.

- There is too much wax in the bonnet.

- Remove part of the wax and try again.

Polishing is difficult.

- The bonnet might be worn.

- Replace bonnet.

Polisher does not turn on.

- Bad connection in the power outlet.

- Check the plug to make sure it is seated properly in the outlet. If you are using an extension cord, check the connection and gauge of the cord's conductors.
- Call an Authorized Service Center.

The pad rotates slower or not at all.

- The motor has problems.
- The motor has problems.

- Call an Authorized Service Center.

In the event of any problem contacting a TRUPER Authorized Service Center, please see our webpage **WWW.TRUPER.COM** to get an updated list, or call our toll-free numbers **800 690-6990** or **800 018-7873** to get information about the nearest Authorized Service Center.

AGUASCALIENTES **DE TODO PARA LA CONSTRUCCIÓN**
GRAL. BARRAGÁN #1201, COL. GREMIAL, C.P. 20030,
AGUASCALIENTES, AGS. TEL.: 449 994 0537

BAJA CALIFORNIA **SUCURSAL TIJUANA**
AV. LA ENCANTADA, LOTE #5, PARQUE INDUSTRIAL EL
FLORIDO II, C.P. 22244, TIJUANA, B.C.
TEL.: 664 969 5100

BAJA CALIFORNIA SUR **FIX FERRETERÍAS**
FELIPE ÁNGELES ESQ. RUIZ CORTÍNEZ S/N, COL. PUEBLO
NUEVO, C.P. 23670, CD. CONSTITUCIÓN, B.C.S.
TEL.: 613 132 1115

CAMPECHE **TORNILLERÍA Y FERRETERÍA AAA**
AV. ALVARO OBREGÓN #324, COL. ESPERANZA
C.P. 24080 CAMPECHE, CAMP. TEL.: 981 815 2808

CHIAPAS **FIX FERRETERÍAS**
AV. CENTRAL SUR #27, COL. CENTRO, C.P. 30700,
TAPACHULA, CHIS. TEL.: 962 118 4083

CHIHUAHUA **SUCURSAL CHIHUAHUA**
AV. SILVESTRE TERRAZAS #128-11, PARQUE INDUSTRIAL
BAFAR, CARRETERA MÉXICO CUAUHTÉMOC, C.P. 31415,
CHIHUAHUA, CHIH. TEL.: 614 434 0052

MEXICO CITY **FIX FERRETERÍAS**
EL MONSTRUO DE CORREGIDORA, CORREGIDORA # 35,
COL. CENTRO, C.P. 06060, CUAUHTÉMOC, CDMX.
TEL.: 55 5522 5031 / 5522 4861

COAHUILA **SUCURSAL TORREÓN**
CALLE METAL MECÁNICA #280, PARQUE INDUSTRIAL
ORIENTE, C.P. 27278, TORREÓN, COAH.
TEL.: 871 209 68 23

COLIMA **BOMBAS Y MOTORES BYMTESA DE MANZANILLO**
BLVD. MIGUEL DE LA MADRID #190, COL. 16 DE
SEPTIEMBRE, C.P. 28239, MANZANILLO, COL.
TEL.: 314 332 1986 / 332 8013

DURANGO **TORNILLOS ÁGUILA, S.A. DE C.V.**
MAZURIO #200, COL. LUIS ECHEVERRÍA, DURANGO,
DGO. TEL.: 618 817 1946 / 618 818 2844

ESTADO DE MÉXICO **SUCURSAL CENTRO JILOTEPEC**
PARQUE INDUSTRIAL # 1, COL. PARQUE INDUSTRIAL
JILOTEPEC, JILOTEPEC, EDO. DE MÉX. C.P. 54257
TEL.: 761 782 9101 EXT. 5728 Y 5102

GUANAJUATO **CÍA. FERRETERA NUEVO MUNDO S.A. DE C.V.**
AV. MÉXICO - JAPÓN #225, CD. INDUSTRIAL, C.P. 38010,
CELAYA, GTO. TEL.: 461 617 7578 / 79 / 80 / 88

GUERRERO **CENTRO DE SERVICIO ECLIPSE**
CALLE PRINCIPAL MZ1 LT. 1, COL. SANTA FE, C.P. 39010,
CHILPANCIÑO, GRO. TEL.: 747 478 5793

HIDALGO **FERREPRECIOS S.A. DE C.V.**
LIBERTAD ORIENTE #304 LOCAL 30, INTERIOR DE PASAJE
ROBLEDO, COL. CENTRO, C.P. 43600, TULANCINGO,
HGO. TEL.: 775 753 6615 / 775 753 6616

JALISCO **SUCURSAL GUADALAJARA**
AV. ADOLFO B. HORN # 6800, COL. SANTA CRUZ DEL
VALLE, C.P.: 45655, TLAJOMULCO DE ZÚNIGA, JAL.
TEL.: 33 3606 5285 AL 90

MICHOACÁN **FIX FERRETERÍAS**
AV. PASEO DE LA REPÚBLICA #3140-A, COL.
EX-HACIENDA DE LA HUERTA, C.P. 58050, MORELIA,
MICH. TEL.: 443 334 6858

MORELOS **FIX FERRETERÍAS**
CAPITÁN ANZURES #95, ESQ. JOSÉ PERDIZ, COL.
CENTRO, C.P. 62740, CUAUTLA, MOR.
TEL.: 735 352 8931

NAVARRIT **HERRAMIENTAS DE TEPIC**
MAZATLAN #117, COL. CENTRO, C.P. 63000, TEPIC, NAY.
TEL.: 311 258 0540

NUEVO LEÓN **SUCURSAL MONTERREY**
CARRETERA LAREDO #300, 1B MONTERREY PARKS,
COLONIA PUERTA DE ANAHUAC, C.P. 66052, ESCOBEDO,
NUEVO LEÓN, TEL.: 81 8352 8791 / 81 8352 8790

OAXACA **FIX FERRETERÍAS**
AV. 20 DE NOVIEMBRE #910, COL. CENTRO, C.P. 68300,
TUXTEPEC, OAX. TEL.: 287 106 3092

PUEBLA **SUCURSAL PUEBLA**
AV. PERIFÉRICO #2-A, SAN LORENZO ALMECATLA,
C.P. 72710, CUAUTLACINGO, PUE.
TEL.: 222 282 8282 / 84 / 85 / 86

QUERÉTARO **ARU HERRAMIENTAS S.A. DE C.V.**
AV. PUERTO DE VERACRUZ #110, COL. RANCHO DE
ENMEDIO, C.P. 76842, SAN JUAN DEL RÍO, QRO.
TEL.: 427 268 4544

QUINTANA ROO **FIX FERRETERÍAS**
CARRETERA FEDERAL MZ. 46 LT. 3 LOCAL 2, COL. EJIDAL,
C.P. 77710 PLAYA DEL CARMEN, Q.R.
TEL.: 984 267 3140

SAN LUIS POTOSÍ **FIX FERRETERÍAS**
AV. UNIVERSIDAD #1850, COL. EL PASEO, C.P. 78320,
SAN LUIS POTOSÍ, S.L.P. TEL.: 444 822 4341

SINALOA **SUCURSAL CULIACÁN**
AV. JESUS KUMATE SUR #4301, COL. HACIENDA DE LA
MORA, C.P. 80143, CULIACÁN, SIN.
TEL.: 667 173 9139 / 173 8400

SONORA **FIX FERRETERÍAS**
CALLE 5 DE FEBRERO #517, SUR LT. 25 MZ. 10, COL.
CENTRO, C.P. 85000, CD. OBREGÓN, SON.
TEL.: 644 413 2392

TABASCO **SUCURSAL VILLAHERMOSA**
CALLE HELIO LOTES 1, 2 Y 3 MZ. #1, COL. INDUSTRIAL,
2A ETAPA, C.P. 86010, VILLAHERMOSA, TAB.
TEL.: 993 353 7244

TAMAULIPAS **VM ORINGS Y REFACCIONES**
CALLE ROSITA #527 ENTRE 20 DE NOVIEMBRE Y GRAL.
RODRÍGUEZ, FRACC. REYNOSA, C.P. 88780, REYNOSA,
TAMS. TEL.: 899 926 7552

TLAXCALA **SERVICIOS Y HERRAMIENTAS INDUSTRIALES**
PABLO SIDAR #132, COL. BARRIO DE SAN BARTOLOMÉ,
C.P. 90970, SAN PABLO DEL MONTE, TLAX.
TEL.: 222 271 7502

VERACRUZ **LA CASA DISTRIBUIDORA TRUPER**
BLVD. PRIMAVERA, ESQ. HORTENSIA S/N, COL.
PRIMAVERA, C.P. 93308, POZA RICA, VER.
TEL.: 782 823 8100 / 826 8484

YUCATÁN **SUCURSAL MÉRIDA**
CALLE 33 #600 Y 602, LOCALIDAD ITZINCAB Y MULSA,
MPIO. UMAN, C.P. 97390, MÉRIDA, YUC.
TEL.: 999 912 2451

Code	Model	Brand
102633	PULA-6AM	TRUPER PRO

Warranty. Duration: 3 years. Coverage: parts, components and workmanship against manufacturing or operating defects, except if used under conditions other than normal; when it was not operated in accordance with the instructive; was altered or repaired by personnel not authorized by TRUPER®. To make the warranty valid, present the product, stamped policy or invoice or receipt or voucher, in the establishment where you bought it or in Corregidora 35, Centro, Cuauhtémoc, CDMX, 06060, where you can also purchase parts, components, consumables and accessories. It includes the costs of transportation of the product that derive from its fulfillment of its service network.
Phone number 800-018-7873. Made in China. Imported by TRUPER, S.A. de C.V. Parque Industrial 1, Parque Industrial Jilotepec, Jilotepec, Edo. de Méx. C.P. 54257, Phone number 761 782 9100.

Stamp of the business. Delivery date:

